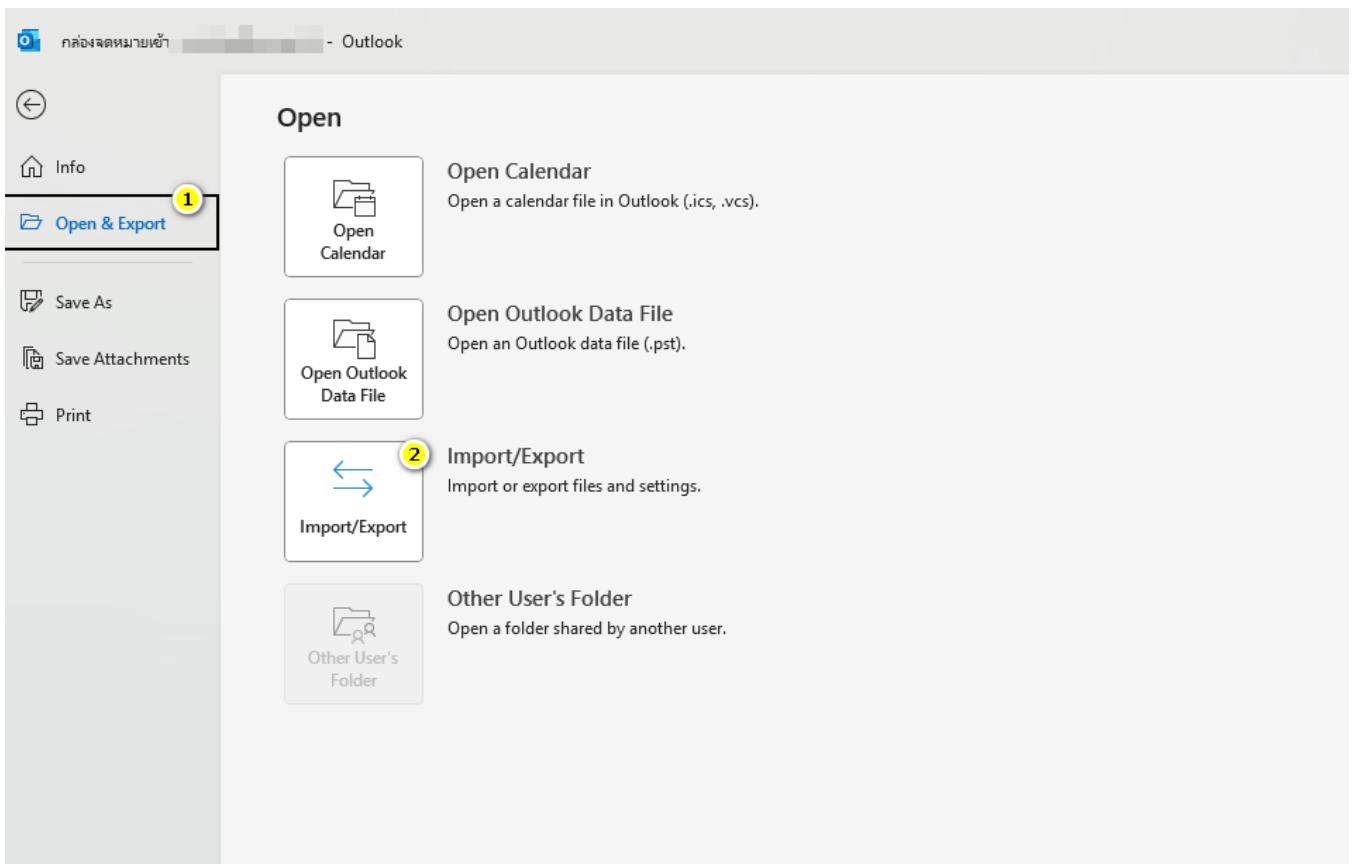


Export (@wu.ac.th)

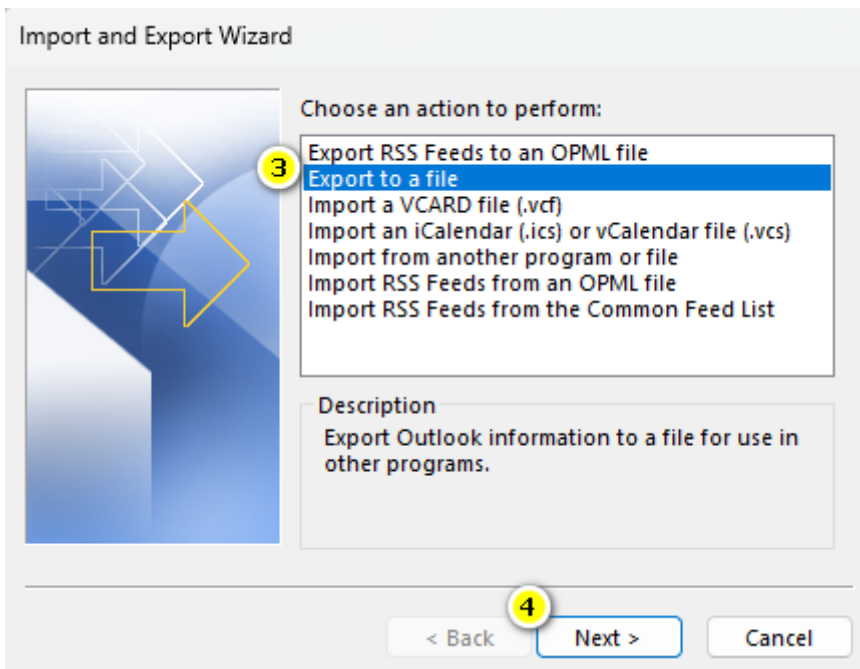
Microsoft 365 (News) Export

email.wu.ac.th export Microsoft Outlook

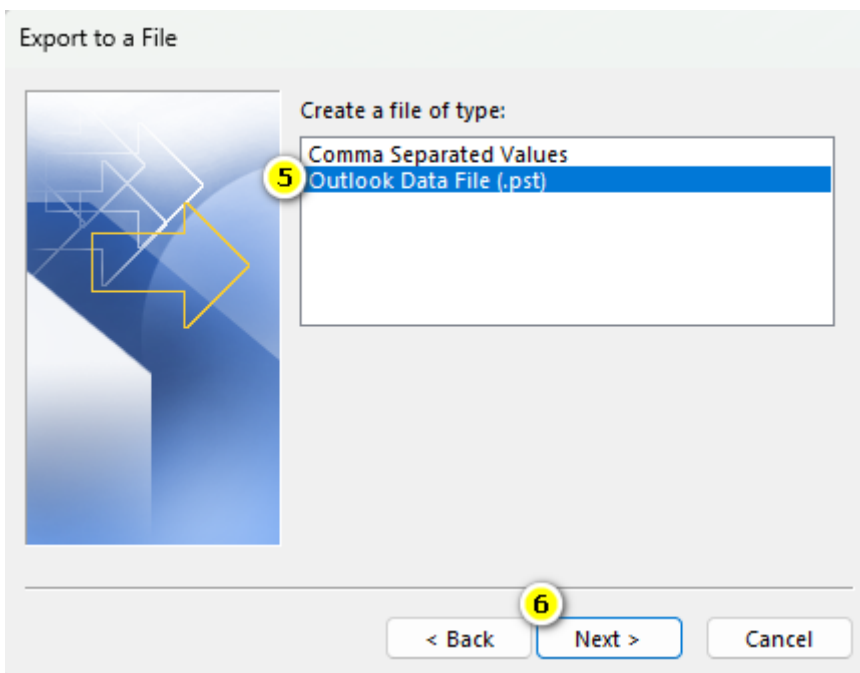
- File > Open & Export > Import/Export



- Export to a file > Next



- Outlook Data File (.pst) > Next



- root mailbox (Inbox, Sent, etc.) Include subfolders > Next

Create Outlook Data File ✕

Add optional password

Password:

Verify Password:

Save this password in your password list

Export https://www.youtube.com/watch?v=kfCX_suwTAQ



Revision #14

Created 22 July 2025 06:18:31 by wisit.ro

Updated 1 August 2025 09:20:42 by wisit.ro